

ScanFront 220/220P Specifications

Type	Sheetfed type network scanner
Document feeding	Automatic or manual sheet feeding
Document size	Width: 50.8 - 216 mm (2.00 - 8.5 in.) Length: 53.9 - 355.6 mm (2.12 - 14.0 in.)
Document thickness and weight	Automatic feeding: 0.06 - 0.15 mm, 52 - 128 g/m ² (14 - 32 lb bond) Manual feeding: 0.06 - 0.20 mm, 52 - 157 g/m ² (14 - 40 lb bond)
Card size and thickness	Size: 53.9 x 85.5 mm (2.12 x 3.37 in.) Thickness: no more than 0.76 mm (0.03 in.), cards with embossed letters are supported
Feeding capacity	50 high-quality sheets, or stacks no thicker than 5 mm (including curls)
Scanning element	1-line CMOS CIS
Light source	LED (red, green, and blue)
Scanning side	Simplex / Duplex
Scanning modes	Black and White, Error Diffusion, Advanced Text Enhancement II 256-level Grayscale 24-bit Color
Scanning resolutions	100 x 100 dpi, 150 x 150 dpi, 200 x 200 dpi, 300 x 300 dpi, 400 x 400 dpi, 600 x 600 dpi
Scanning speed (A4/LTR, Vertical, 200 dpi)	Black and White: 26 ppm (Simplex), 35 ipm (Duplex) 256-level Grayscale: 23 ppm (Simplex), 23 ipm (Duplex) 24-bit Color: 9 ppm (Simplex), 9 ipm (Duplex)
Useful functions	Ultrasonic Double Feed Detection (ScanFront 220P only), Automatic Page Size Detection, Deskew, Skip Blank Page, Color Dropout/Enhance Color, Text Orientation Recognition, Bleed-through Reduction
Memory size (for image processing)	512MB
Operation panel	8.5 inch TFT Liquid Crystal Display with Touch Panel
Fingerprint sensor	Optical Sweep Type Sensor (ScanFront 220P only)
Interface	Hi-Speed USB 2.0 x2 (for USB memory, USB keyboard, or USB mouse), LAN 10BaseT/100BaseTX connector, PS/2 mouse port, PS/2 keyboard port
Power requirements	AC100 - 240V (50/60 Hz)
Power consumption	Scanning: 26W, Display Off mode: 10W, Power Turned Off: less than 1W
Operating environment	10 - 32.5°C (50 - 90.5°F), Humidity: 20 - 80% RH
Dimensions (W x D x H)	310 x 234 x 158 mm (12.2 x 9.21 x 6.22 in.), with feed trays closed
Weight	Approx. 3.4 kg (7.50 lb.), excluding AC adapter
Optionals/Consumables	Exchange Roller Kit (Feed Roller, Retard Roller, Paper Support Guide)

Specifications are subject to change without notice.

EASY MAINTENANCE

The ScanFront 220/220P is durable and easy to keep in top scanning condition. An Exchange Roller Kit (sold separately) is available for replacing worn rollers and can be installed yourself—no service technician is required.

Company names and product names appearing in this brochure are the registered trademarks and/or trademarks of their respective owners.



CANON ELECTRONICS INC.

1248, Shimokagemori, Chichibu-shi, Saitama 369-1892, Japan
www.canon-elec.co.jp

CANON U.S.A. INC.
New York Office/Headquarters: One Canon Plaza, Lake Success, NY 11042, U.S.A. Tel: (516) 328-5000
CANON CANADA, INC.
Toronto Office/Headquarters: 6390 Dixie Road, Mississauga, Ontario L5T 1P7, Canada Tel: (905) 795-1111
CANON EUROPA N.V.
Bovenkerkerweg 59-61, P.O.Box 2262, 1180 EG Amstelveen, The Netherlands Tel: (020) 545-8545
CANON LATIN AMERICA, INC.
703 Waterford Way, Suite 400, Miami, Florida 33126, U.S.A. Tel: (305) 260-7400
CANON AUSTRALIA PTY. LTD.
1 Thomas Holt Drive, North Ryde, Sydney, NSW 2113, Australia Tel: (02) 9805-2000
CANON SINGAPORE PTE. LTD.
1 Harbour Front Avenue, #04-01 Keppel Bay Tower, Singapore 098632 Tel: (65) 6799-8888
CANON HONGKONG COMPANY LTD.
19th Floor, The Metropolis Tower, 10 Metropolis Drive, Hunghom, Kowloon, Hong Kong Tel: (852) 2170-2828
CANON KOREA BUSINESS SOLUTIONS INC.
168-12 Samseong-Dong, Gangnam-gu, Seoul, Korea Tel: (02) 3450-0700



ScanFront 220/220P

NETWORK SCANNER



SCAN BY TOUCH



For Quick, Easy Document Sharing Over Your Network and Across the Globe

- Standalone A4-size color duplex network scanner
- Ultra-compact, streamlined design
- Large 8.5 in. color touch screen
- Fast, high quality scanning up to 26 pages per minute (35 ipm)* *(A4/LTR, B&W, 200dpi)
- Scan directly to PC folders, e-mail, FTP, and USB memory
- Personal and shared address books, plus custom JOB button shortcuts
- Easy remote scanner management and robust security features
- Secure, instant login with fingerprint authentication (SF-220P)



Ultra-compact and network-ready. Easy to use, easy to manage. Safe and secure.

In terms of scanning innovation and workflow efficiency, Canon's document scanners are in a class of their own. Every aspect—from the state-of-the-art imaging technology to the user-friendly interface and design—has been developed to match the needs of today's busy offices. And now expanding productivity even further is the ScanFront 220/220P, a sleek, extremely compact standalone unit that plugs directly into your office network to deliver direct network scanning and sending—with full touch-screen convenience. Available in Standard (ScanFront 220) and Professional (ScanFront 220P) versions, both models ensure network security and can restrict access to only authorized users. The Professional model additionally includes Ultrasonic Double Feed Detection and fingerprint authentication for enhanced convenience.

DIRECT NETWORK SCANNING

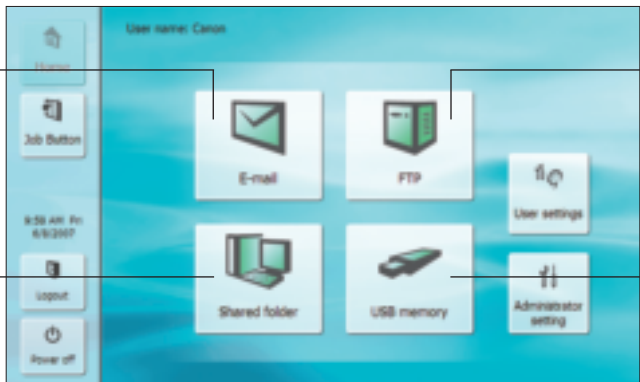
The ScanFront 220/220P makes it easy to scan and send documents to destinations over your network. In a few simple steps, you can scan directly to one or multiple shared PC folders, e-mail addresses, FTP servers, or to USB memory, in any combination of your choice.

■ Scan to E-mail

Send scanned images to a designated e-mail address, with customizable subject line and message.

■ Scan to Shared folder

Send scanned images to a shared folder on a PC or server connected to the network.



Home screen

■ Scan to FTP

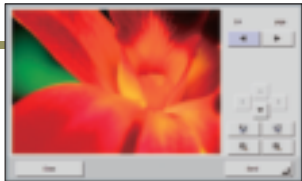
Send scanned images to a specific folder on an FTP server.

■ Scan to USB Memory

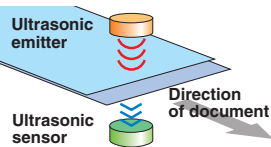
Send scanned images to USB memory inserted in the USB slot of the ScanFront 220/220P.

RENOWNED CANON IMAGE QUALITY AND SPEED

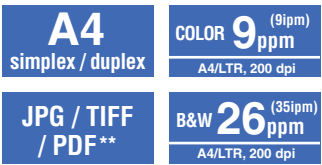
Featuring advanced CMOS contact image sensor technology and top scanning speeds of 26 pages per minute (35ipm)*, the high-speed ScanFront 220/220P captures high quality color, grayscale, and B&W images in diverse formats such as searchable PDF. Canon's reliable page separation mechanism with straight path paper feeding ensure smooth scanning of a wide variety of document types, including thick documents, mixed batches, drivers licenses, and embossed cards.



*A4/LTR, B&W, 200dpi



Ultrasonic Double Feed Detection, available with ScanFront 220P only



**high-compression, encryption, OCR text-embedding are available

Advanced image processing

- Automatic Page Size Detection
- Des skew
- Skip Blank Page
- Color Dropout
- Text Orientation Recognition
- Bleed-through Reduction
- Advanced Text Enhancement II

EASY TO USE

■ Intuitive touch panel operation

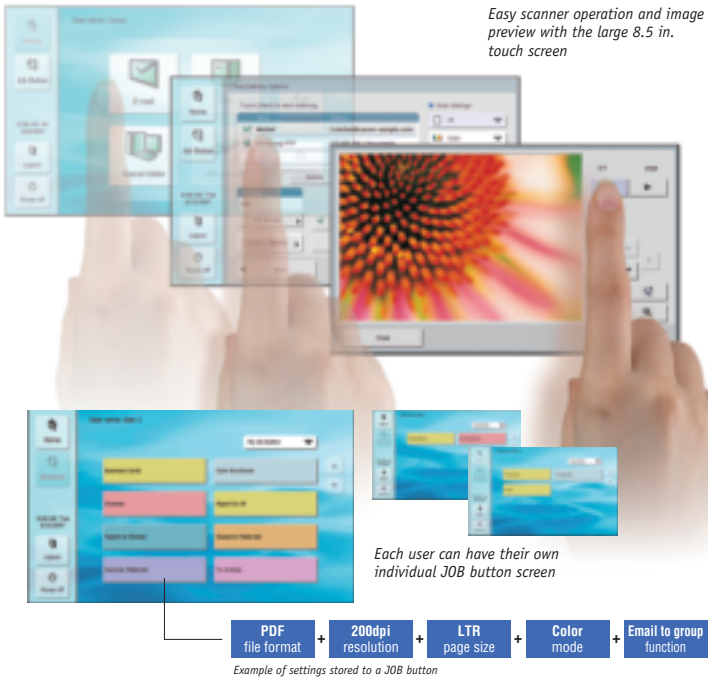
The ScanFront 220/220P is extremely easy to use. With the simple, straightforward GUI on its touch panel display, users can easily navigate options to scan and send documents in just a few simple steps. Also, the large, easy-view 8.5-inch display lets users preview scanned images in high quality detail and color for easy confirmation before sending.

■ Personal and shared address books

All scanning destinations, such as e-mail and FTP server addresses and networked PC folders, can be stored within the ScanFront 220/220P. Each user can have their own private address book, or a shared address book can be used. Address book entries, which can be easily sorted by destination type and alphabet, are selected by touch. Multiple addresses, even of different destination types, can be grouped together as a single entry for easy group sending.

■ Custom one-touch JOB button shortcuts for each user

On-screen JOB buttons offer one-touch access to frequently performed scanning tasks. The appropriate scanner settings and addresses to send to are registered in advance to a button, which can be named and color-coded as desired.



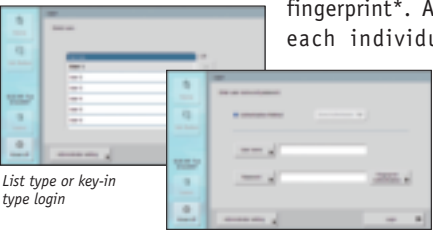
Easy scanner operation and image preview with the large 8.5 in. touch screen

Each user can have their own individual JOB button screen

ROBUST SECURITY FEATURES

■ User authentication and user access control

The ScanFront 220/220P prevents unauthorized use with a secure user authentication method that verifies users by ID and password or by fingerprint*. Administrators can assign each individual user with specific functionality to restrict the distribution of sensitive information.



List type or key-in type login

*ScanFront 220P only

■ Fingerprint authentication

The ScanFront 220P is additionally equipped with fingerprint authentication for convenient, instantaneous login. Instead of the standard login method, the user sweeps their finger over the sensor to verify their identity and is then automatically logged into their personal home screen.

Available with ScanFront 220P only

■ Memory wipe function

After a document is scanned and sent, the secure memory wipe function automatically clears all document data from the scanner.

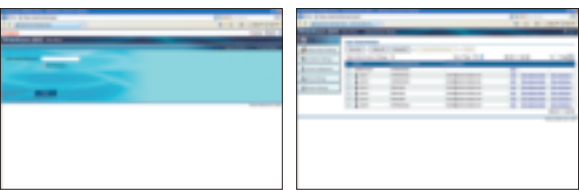
■ PDF encryption

Scanned images can be encrypted and saved as password-protected PDF files to protect valuable data.

EASY TO SET UP AND MANAGE

■ Remote management via Web browser

The ScanFront 220/220P allows network administrators to remotely connect to the device via Web browser and centrally manage scanner settings, user accounts and more. Individual users can also log into the system from their own PCs to manage their address books and create JOB buttons, depending on their level of access.



Administrator login screen

Remotely manage scanner settings, user accounts and more