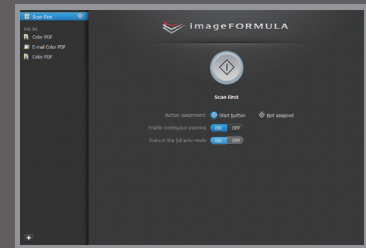


Bundled Software

Capture OnTouch

Windows
Mac OS



CaptureOnTouch makes it possible for anyone to scan documents easily. The intuitive user interface lets you choose between Automatic and Job Scan Mode.

Presto! BizCard

Windows
Mac OS

Presto! BizCard lets you scan business cards to convert and organize important contact information into a searchable database.

EVERNOTE

Windows
Mac OS

Evernote is a cloud based data management application. The CaptureOnTouch software comes equipped with an option to send and store data (scanned images, photos, memos, etc.) to the Evernote server.

OmniPage

Windows

OmniPage converts original paper documents into editable electronic files through OCR.

PaperPort

Windows

PaperPort is a file management application renowned for its intuitive and use-friendly graphic interface, making it easy to store, organize, and retrieve your digital documents.

eCopy® PDF Pro Office

Windows

eCopy PDF Pro Office instantly creates 100% industry-standard, universally viewable PDFs files, and converts static PDF documents into editable files and useful information. eCopy PDF Pro Office allows you to attain the flexibility of a universal document format for higher productivity and seamless information exchange.

Presto! PageManager

Mac OS

Presto! PageManager promptly puts your documents on the computer screen where they can be easily arranged and sorted.

In addition to the above applications, the DR-C125 can be used with a wide variety of ISIS- or TWAIN-based scanning software available on the market.

DR-C125 Specifications

Type		Desktop sheetfed scanner
Document feeding		Automatic sheet feeding
Document size	Plain Paper	Width: 50.8 to 216 mm (2" to 8.5") Length: 53.9 to 356 mm (2.12" to 14") Use Long Document mode to scan documents up to 3,000 mm (118.1") long. Use straight path to scan documents that are 70 mm (2.76") long or less.
	Business Card	50 x 53.9 mm (1.97" x 2.12") or larger Vertical feeding only.
	Plastic Card	53.9 x 85.5 mm (2.12" x 3.37") (ISO standard) Straight path and horizontal feeding only. Embossed cards can be scanned.
Document thickness	Plain Paper	U-turn path: 52 to 128 g/m ² (0.06 to 0.15 mm) Straight path: 40 to 209 g/m ² (0.05 to 0.25 mm)
	Business Card	300 g/m ² (140 lb bond) 0.35 mm (0.0138") or less
	Plastic Card	0.76 mm (0.03") or less
Feeding capacity		6 mm stack (including curls) or 30 sheets of 80g/m ² (20 lb bond)
Scanning element		CMOS CIS
Light source		LED (red, green, and blue)
Scanning side		Simplex / Duplex, Skip Blank Page, Folio
Scanning modes		Black and white, Error diffusion, Advanced Text Enhancement, Advanced Text Enhancement II (for Windows only), 256-level grayscale, 24-bit color
Scanning resolutions		150 x 150 dpi, 200 x 200 dpi, 300 x 300 dpi, 400 x 400 dpi, 600 x 600 dpi
Scanning speed ¹⁾ (A4/LTR, portrait, 200 dpi)		25 ppm (simplex) / 50 ipm (duplex)
Useful functions		Double feed detection, Advanced Text Enhancement, Skip blank page, Prescan, Auto paper size detection, Deskew, Batch separation, Color drop-out, Color enhancement, Text orientation recognition, Continuous scanning, Edge enhancement, Preset gamma curve, Scan area settings Scanning with Multistream settings, Folio scanning, Remove background, Moire reduction, Background smoothing, Full auto mode, Reduction Ratio Adjustment
Interface		Hi-speed USB 2.0
Software		For Windows: ISIS/TWAIN driver, CaptureOnTouch, Presto! BizCard, Omnipage, PaperPort, eCopy PDF Pro Office, Evernote ²⁾ For Mac OS X ³⁾ : TWAIN driver, CaptureOnTouch, Presto! BizCard, Presto! PageManager, Evernote ²⁾
Power requirements		AC100 to 240 V (50/60Hz)
Power consumption	120V	Scanning: maximum 12.7 W; in the sleep mode: maximum 1.8 W; with power switch OFF: maximum 0.5 W
	200 - 240V	Scanning: maximum 12.8 W, in the sleep mode: maximum 1.9 W, with power switch OFF: maximum 0.5 W
Operating environment		10°C to 32.5°C (50°F to 90.5°F), Humidity: 20% to 80%
Dimensions (W x D x H)		300 mm (11.81") x 217 mm (8.54") x 156 mm (6.14") with the feed tray closed
Weight		Approx. 2.6 kg
Options / consumables		Exchange Roller Kit (feed roller and retard roller)

1) Actual scanning speed may vary depending on your system configuration and PC.
2) Installed via Internet connection.
3) Requires Mac OS X 10.4.11 or later.
Specifications are subject to change without notice.

Microsoft, Windows, Windows Vista, PowerPoint and SharePoint are either registered trademarks or trademarks of Microsoft Corporation in the United States and/or other countries.
Apple and Mac OS are trademarks of Apple Inc., registered in the U.S. and other countries.



ENERGY STAR and the ENERGY STAR mark are registered U.S. trademarks.
Other company names and product names appearing in this brochure are the registered trademarks and/or trademarks of their respective owners.

Canon

CANON ELECTRONICS INC.

1248, Shimokagemori, Chichibu-shi, Saitama 369-1892, Japan
www.canon-elec.co.jp

CANON U.S.A. INC.
New York Office/Headquarters: One Canon Plaza, Lake Success, NY 11042, U.S.A. Tel: (516) 328-5000
CANON CANADA, INC.
Toronto Office/Headquarters: 6390 Dixie Road, Mississauga, Ontario L5T 1P7, Canada Tel: (905) 795-1111
CANON EUROPA N.V.
Bovenkerkerweg 59-61, P.O.Box 2262, 1180 EG Amstelveen, The Netherlands Tel: (020) 545-8545
CANON LATIN AMERICA, INC.
703 Waterford Way, Suite 400, Miami, FL 33126, U.S.A. Tel: (305) 260-7400
CANON AUSTRALIA PTY. LTD.
1 Thomas Holt Drive, North Ryde, Sydney, NSW 2113, Australia Tel: 13 13 83

PUB. 0156W370

© CANON ELECTRONICS INC. 2011

Available from:
Imaging Station
www.imagingstation.com.au
e: sales@imagingstation.com.au

PRINTED IN JAPAN
IMPRIMÉ AU JAPON

Canon

imageFORMULA
DR-C125

Conserve valuable desk space
with the slim & smart
compact scanner.

Built compact without compromising speed or quality,
with a minimalist design achieved through the
elimination of obtrusive tray extensions, the
Canon DR-C125 provides reliable
scanning while freeing your
workspace like never before.



B/W, Gray
25
ppm

COLOR
25
ppm

Win&Mac
Hybrid

High-speed, high-quality scanning housed in a slim, upright body.

The DR-C125 introduces a new standard for compact scanners.

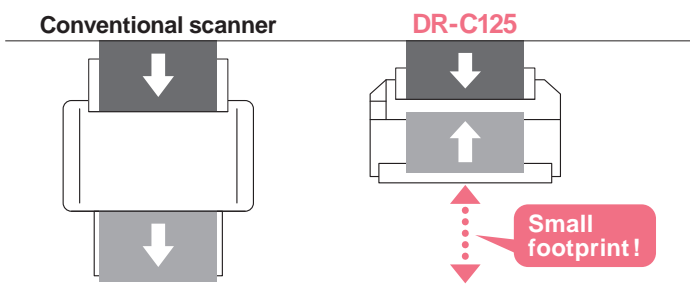
Small but speedy

Despite its compact size, the DR-C125 is capable of high-speed 1-pass duplex scanning at 25 sheets per minute. Modes ranging from monochrome (binary) to 24-bit full color are also available at high resolutions of up to 600 dpi.

	Simplex (ppm)		Duplex (ipm)	
	B/W,Grayscale	Color	B/W,Grayscale	Color
150-200dpi	25	25	50	50
300dpi	25	15	50	30

Slim and narrow body

The upright design and U-turn path, which requires no additional space for document ejection, provide the ultimate in space saving performance.



Scan a variety of documents with the two available ejection paths. Use the U-turn path to scan and eject standard-paper documents or business cards without consuming additional space in front of the scanner. You can switch to the straight ejection path with a simple flip of a lever to scan thick document sheets, driver's licenses, ID cards, and other documents that cannot be ejected through the U-turn path.

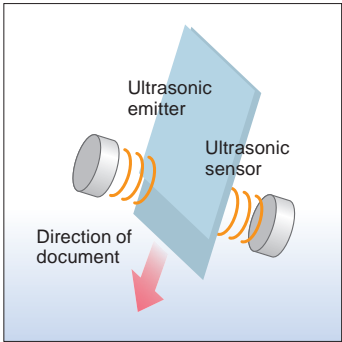
Natural and intuitive feeding

With the DR-C125, documents for scanning are fed face up and in a natural orientation that reduces document loading mistakes.



Reliable double feed detection

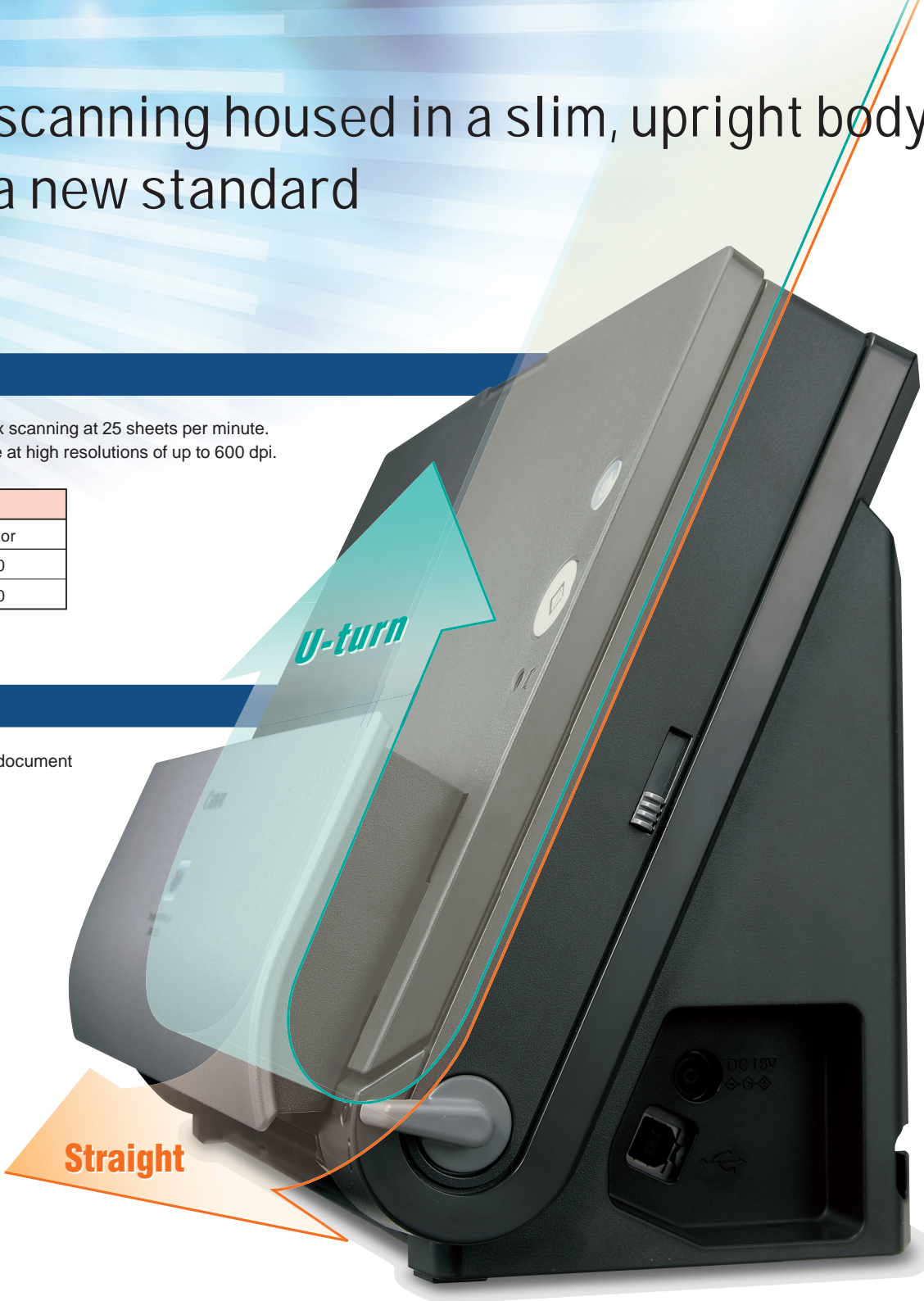
The built-in ultrasonic sensor accurately detects when more than one sheet is fed simultaneously and can prevent important information from being left out.



Easy to Use

Simple and easy one-push scanning

A simple press of the Start button starts the intuitive scanning application, CaptureOnTouch, allowing you to scan via easy-to-follow on-screen instructions.

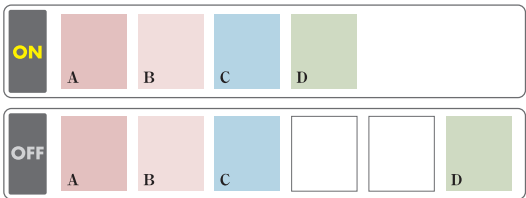
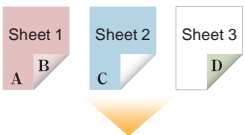


The inclusion of a U-turn document path and vertical feeding mechanism eliminates the need for extensions and provides the ultimate in space-saving scanning. While leaving a small footprint, the DR-C125 scans at up to 25 sheets per minute with full-color imaging capabilities. A straight path option is also available for more delicate documents, and switching between options is quick and simple. Scan a wide range of document types – all on a single scanner.

Variety of processing options for precise and accurate reproduction

Skip Blank Page

When scanning one-sided and two-sided documents at the same time, you can delete images of blank pages to produce scanned images without redundancy. This function is also effective with colored-paper documents that are blank.

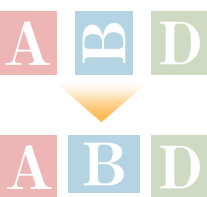


Auto Color Detection

The scanner can automatically determine whether to save scanned images in color based on the contents of the document. This eliminates the need to separate documents that contain both color and monochrome pages before scanning.

Text Orientation Recognition

When scanning document sheets of varying text orientations, the text can be detected and rotated to the correct orientation automatically in the scanned images, thereby removing the hassle of rotating them manually.



Deskew

Images of documents scanned at an angle can be straightened before they are saved, thereby eliminating the need for rescans and ensuring smooth, continuous scanning.



Full Auto Mode

A Full Auto Mode is available with the color mode, page size, resolution, and text orientation automatically determined based on the contents of the document. This mode allows you to scan documents that contain pages of varying type under conditions that best suit each type. The mode also includes the Skip Blank Page function for efficient scanning of only the necessary pages.

Redesigned Dedicated Software

The dedicated software supplied with DR-Series scanners, CaptureOnTouch, has been redesigned with a newly streamlined interface for even smoother scanning operations. Both a Windows version and a Mac OS X version are supplied for the same user-friendly experience on any system.

CaptureOnTouch



Multiple file format options to suit your purpose

The PDF, JPEG, TIFF, BMP (Windows only), and PPTX (Windows only) file formats are supported.



High-compression PDF support

You can use high-compression conversion to store even documents with high page volumes as single compressed PDF files.

PDF files containing OCR results

You can perform OCR during scan operations and add the resulting text information to the created PDF files, thereby allowing full-text searching in the scanned images.

Support for PDF/A standard

The scanner supports the creation of PDF files in PDA/A format, a file format developed as the international standard for long-term archiving of electronic documents.

Evernote / SharePoint compatibility

Evernote and SharePoint have been added as possible output destinations for scanned images.